

## Helpdesk / Technical Support Details

### Swann Technical Support

All Countries E-mail: [tech@swannsecurity.com](mailto:tech@swannsecurity.com)

Telephone Helpdesk

**USA** toll free

1-800-627-2799

(Su, 2pm-10pm US PT)

(M-Th, 6am-10pm US PT)

(F 6am-2pm US PT)

**USA Exchange & Repairs**

1-800-627-2799 (Option 1)

(M-F, 9am-5pm US PT)

**AUSTRALIA** toll free

1300 138 324

(M 9am-5pm AUS ET)

(Tu-F 1am-5pm AUS ET)

(Sa 1am-9am AUS ET)

**NEW ZEALAND** toll free

0800 479 266

**UK**

0203 027 0979

See <http://www.worldtimeserver.com> for information on time zones and the current time in Melbourne, Australia compared to your local time.

## Warranty Information

Swann Communications USA Inc.  
12636 Clark Street  
Santa Fe Springs CA 90670  
USA

Swann Communications  
Unit 13, 331 Ingles Street,  
Port Melbourne Vic 3207

Swann Communications LTD.  
Stag Gates House  
63/64 The Avenue  
SO171XS  
United Kingdom

Swann Communications warrants this product against defects in workmanship and material for a period of one (1) year from its original purchase date. You must present your receipt as proof of date of purchase for warranty validation. Any unit which proves defective during the stated period will be repaired without charge for parts or labour or replaced at the sole discretion of Swann. The end user is responsible for all freight charges incurred to send the product to Swann's repair centres. The end user is responsible for all shipping costs incurred when shipping from and to any country other than the country of origin.

The warranty does not cover any incidental, accidental or consequential damages arising from the use of or the inability to use this product. Any costs associated with the fitting or removal of this product by a tradesman or other person or any other costs associated with its use are the responsibility of the end user. This warranty applies to the original purchaser of the product only and is not transferable to any third party. Unauthorized end user or third party modifications to any component or evidence of misuse or abuse of the device will render all warranties void.

By law some countries do not allow limitations on certain exclusions in this warranty. Where applicable by local laws, regulations and legal rights will take precedence.



© Swann Communications 2010

### FCC Verification

This equipment has been tested and found to comply with the limits for Class B digital device, pursuant to part 15 of the FCC Rules. These limits are designed to provide reasonable protection against harmful interference in a residential installation. This equipment generates, uses and can radiate radio frequency energy and, if not installed and used in accordance with the instructions, may cause harmful interference to radio or television reception, which can be determined by turning the equipment off and on, the user is encouraged to try to correct the interference by one or more of the following measures:

- Reorient or relocate the receiving antenna
- Increase the separation between the equipment and the receiver
- Connect the equipment into an outlet on a circuit different from that to which the receiver is connected
- Consult the dealer or an experienced radio/TV technician for help

**WARNING:** Modifications not approved by the party responsible for compliance could void user's authority to operate the equipment.

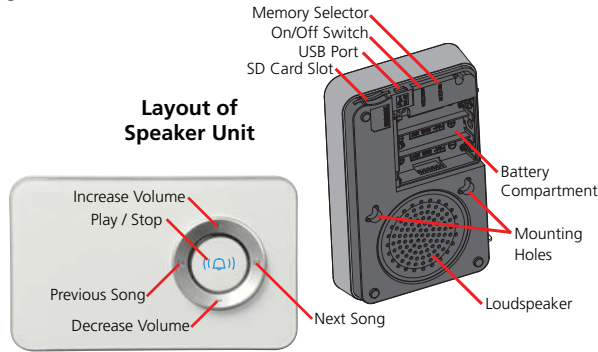


# MP3 Doorbell

Sick of not hearing your favourite tunes when someone comes to the door? Tell us about it. In fact, we were so sick of that generic "bing-bong" (as opposed to something we could groove-on-out to) that we felt the need to release this MP3 playing wireless doorbell!

## Basically, how it works is like this:

- You mount the doorbell near your front door, then
- mount the speaker unit some where inside your home (within 50m/150ft of the doorbell),
- put some of your favorite tunes (or sections of them - see the next page) onto an SD card,
- pop the SD card into the speaker unit and then,
- when someone presses the doorbell, you'll hear music instead of a drab door chime!



**Memory Selector switch:** When this is set to **SD**, the doorbell will try to play music off an SD card. If there is no SD card, the doorbell will revert to its internal memory with generic doorbell sounds. If this is set to **IN**, the unit will always use its internal sounds, even when there's an SD card in there.

### Mounting Guide: Doorbell

Remove the rear cover of the doorbell. Use a small, flat-head screwdriver to pry off the rear cover.

If you're installing/replacing the 27A battery in the doorbell, now's a great time to do it.

Insert two screws through the two holes in the rear cover. Screw the rear cover to the wall. Depending on the surface, you may need to drill guide holes and/or use masonry plugs or dry wall anchors.

### Mounting Guide: Speaker Unit

The speaker unit mounts onto screws which have about 1/4" (7mm or so) protruding from the wall. There are two mounting holes on the rear which are designed to allow you to mount the speaker unit either horizontally or vertically.

Of course, there's no requirement to mount the speaker unit at all. Some people find it more convenient to simply place it on a table or shelf. Leaving it unmounted can be helpful if you've got a large home, as it allows you to move about and take the speaker unit with you! No more missing visitors 'cause you were all the way down back of the house...

### Batteries

For the best performance, use fresh, high quality alkaline AA batteries. **Don't mix battery types.**

The speaker unit needs 3 AA batteries, which are inserted into the battery compartment on the rear of the unit. The battery compartment slides open, as indicated by the markings on the rear of the speaker unit. The battery polarity is indicated by the markings within the battery compartment.

The doorbell itself requires a 12V 27A battery. These are somewhat uncommon, but will be available from specialist battery suppliers and the majority of electronics stores.

To install the battery in the doorbell, remove the rear cover. The battery polarity is indicated by the markings in the battery compartment.



## USB Port

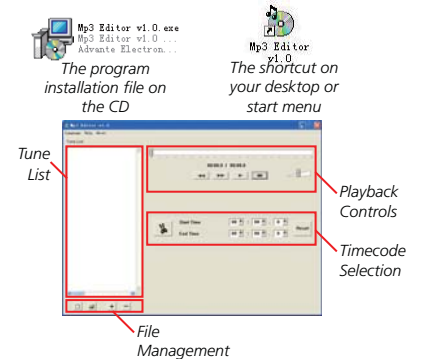
The speaker unit can connect to a computer via the USB port, using the included USB cable. It interfaces as a USB mass storage device, much like a thumb drive, allowing you to copy music on or off the SD card without a dedicated card reader. The unit can also be powered via USB.

**We strongly recommend removing the batteries from the unit when being powered via the USB connection.**

## Editing Music

You'll need to install the included software on a compatible computer. The software is compatible with *Windows*-based systems only (*Mac* users most likely have audio editing software installed already!). We're assuming you want to select a specific part of a song to playback, such as jumping straight to the chorus of a favourite song, for example. If you want to listen to a whole track, just copy it onto an SD card and away you go!

- Insert the included CD into your computer.
- Run the file named "MP3 Editor Vx.x" (where x is the version number). Follow the prompts to complete installation.
- Open the editor by using the MP3 Editor icon, which will be in your *Start Menu*, unless you chose not to do this during the installation process.
- Click + to add MP3 files to the playlist, and - to remove a file from the *Tune List*.
- Highlight the file you want to edit.
- Using the playback controls (which work like a normal music player) test the chosen file and locate the points you want the excerpt to start and end.
- Once you've figured out your start and end points, enter them into the *Timecode Selection* area.
- Finally, click the scissors icon . This will "cut" the selected section out of the track.
- The new MP3 file will be saved to the same folder as the source file, and can be dragged and dropped onto an SD card for use in the doorbell.
- You can save or open a Tune List by using respective icons in the File Management section.



## Copying Music

Simply use your file explorer to drag-and-drop files straight onto an SD card. Most MP3 files will work, with the exception of extremely high or low data rates and/or DRM (see below). For reliable operation, we suggest using MP3 files with a 128kbps data rate which you have encoded yourself, or has come from a trustworthy source.

## A note about DRM (Digital Rights Management)

Many MP3 files are digitally signed and encoded, and are allowed to playback only on authorised devices. We're not going to name names, but many leading online music distributor's MP3 files are 'locked' for playback only on the system that downloaded them.

Avoid trying to source music from these sites, as results will vary. There are many software solutions for creating MP3 files from CD (many are freeware). If you're having trouble with commercially available MP3s, you might consider encoding some yourself.

**Remember: Piracy is never cool. Unless you're Captain Jack Sparrow... which you're not. Always acquire your MP3s (and any other media) legally!**

The SD card in the doorbell does come pre-loaded with some tunes to save you some time and trouble.

### Technical Specifications

Speaker Unit		Doorbell Unit	
Operating Current:	4.5 ~ 5V DC (3 x AA battery, not included)	Power Requirements:	12V (1 x 27A battery, included)
Internal Sounds:	32	Transmission Frequency:	433MHz +/- 1MHz
Memory Type:	SD/SDHC Card up to 16GB	Transmission Range:	Up to 50m (line of sight)