

Helpdesk/Technical Support

Technical Support E-mail: tech@swann.com

Telephone Helpdesk

USA Toll Free	1-800-627-2799	AUSTRALIA	1800 788 210
USA Parts & Warranty (M-F, 9am-5pm US PT)	1-800-627-2799	NEW ZEALAND Toll Free	0800 479 266
		UK	0808 168 9031

Limited Warranty Terms & Conditions

Swann Communications warrants this product against defects in workmanship and material for a period of one (1) year from its original purchase date. You must present your receipt as proof of date of purchase for warranty validation. Any unit which proves defective during the stated period will be repaired without charge for parts or labour or replaced at the sole discretion of Swann. The end user is responsible for all freight charges incurred to send the product to Swann's repair centres. The end user is responsible for all shipping costs incurred when shipping from and to any country other than the country of origin.

The warranty does not cover any incidental, accidental or consequential damages arising from the use of or the inability to use this product. Any costs associated with the fitting or removal of this product by a tradesman or other person or any other costs associated with its use are the responsibility of the end user. This warranty applies to the original purchaser of the product only and is not transferable to any third party. Unauthorized end user or third party modifications to any component or evidence of misuse or abuse of the device will render all warranties void.

By law some countries do not allow limitations on certain exclusions in this warranty. Where applicable by local laws, regulations and legal rights will take precedence.

For Australia: Our goods come with guarantees which cannot be excluded under Australian Consumer Law. You are entitled to a replacement or refund for a major failure and for compensation for any other reasonably foreseeable loss or damage. You are also entitled to have the goods repaired or replaced if the goods fail to be of acceptable quality and the failure does not amount to major failure.



M1080ZLDCAM_020616E | © Swann 2016

Mounting your Camera

The camera can be mounted onto a flat, vertical or horizontal surface using the supplied mounting screws. Materials such as hardwood, brick or masonry are ideal. You can mount the camera onto a metal surface, but you'll need to supply your own mounting hardware.

To mount the camera:

- Loosen (do not fully remove) the 3 hex screws (T6H) on the base of the camera mount. The mounting bracket will come away from the dome assembly
- If you're mounting to a wooden surface, screw the bracket directly to the surface
- When mounting to a masonry surface, you'll need to use the included wall plugs

Aiming the camera:

- Gently loosen the 3 hex screws (T6H) located at

the base of the camera

- The gimbal mount can be rotated left or right
- The camera can be aimed in almost any direction from wherever you choose to mount it. After you've finished adjusting the viewing angle, tighten each screw to lock the camera's position in place
- The camera zoom is controlled by your DVR's PTZ controls

Positioning the cables:

- When running the cable, try to avoid bending it at sharp angles
- Avoid positioning the cable near live electrical wiring as electrical current generates a magnetic field which can interfere with the signal from your camera

FCC Verification

This equipment has been tested and found to comply with the limits for Class B digital device, pursuant to part 15 of the FCC Rules. These limits are designed to provide reasonable protection against harmful interference in a residential installation. This equipment generates, uses and can radiate radio frequency energy and, if not installed and used in accordance with the instructions, may cause harmful interference to radio or television reception, which can be determined by turning the equipment off and on, the user is encouraged to try to correct the interference by one or more of the following measures:

- Reorient or relocate the receiving antenna
- Increase the separation between the equipment and the receiver
- Connect the equipment into an outlet on a circuit different from that to which the receiver is connected
- Consult the dealer or an experienced radio/TV technician for help

These devices comply with part 15 of the FCC Rules. Operation is subject to the following two conditions:

- (1) These devices may not cause harmful interference.
- (2) These devices must accept any interference received, including interference that may cause undesired operation.



HD Zoom Security Camera

For use with Swann 1080P HD DVRs

EN

INSTRUCTION MANUAL

Introduction

Congratulations on your purchase of this HD Zoom Security Camera.

- Use the On-Screen Display (OSD) controller & built-in software to customize the camera settings including color, brightness & wide dynamic range for the best video quality every time.
- This camera can be used in combination with other analog surveillance technology including AHD, TVI, CVI from Swann & other brands. It's the perfect addition if you already have a recording solution (DVR) & need extra cameras.
- The camera joystick is used to set the signal modes for the camera.
- The zoom function is controlled by your DVR's PTZ controls. Please search the Support Information at support.swann.com

(search for '1080ZLD') for instructions on controlling this feature.

Important note: All jurisdictions have specific laws and regulations relating to the use of cameras. Before using any camera for any purpose, it is the buyer's responsibility to be aware of all applicable laws and regulations that prohibit or limit the use of cameras and to comply with the applicable laws and regulations.

Warning: Modifications not approved by the party responsible for compliance could void user's authority to operate the equipment.

Important safety instructions

- 1) Make sure product is fixed correctly and stable if fastened in place.
- 2) Do not operate if wires and terminals are exposed.

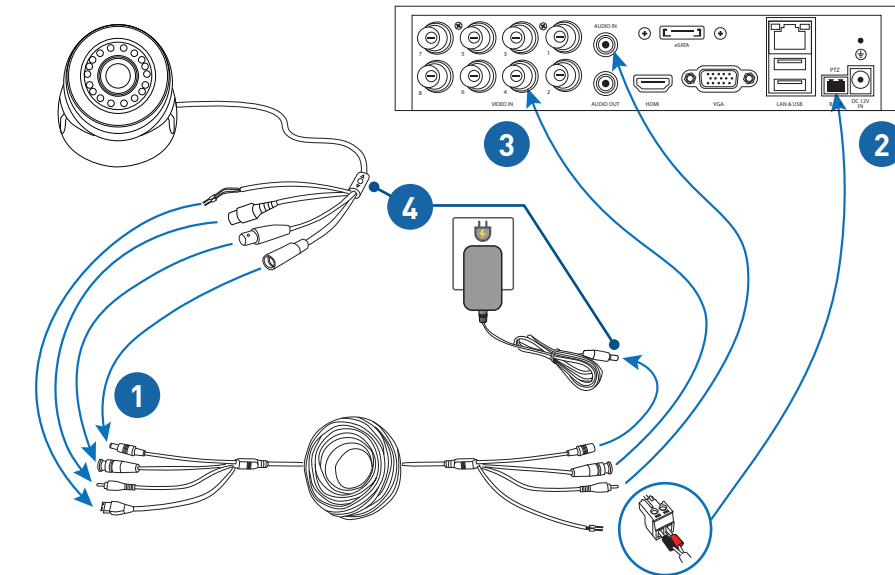
Choosing a location for your Camera

This camera has an on-screen configuration menu to configure various image settings as they apply to the camera and the scene that you wish to view.

- 1) You should endeavor to set the camera up close to the area you wish to view before you install the camera so that you have access to the joystick and can adjust the image settings.
- 2) What you want to monitor and where you'll get the best view of it.
- 3) How you're going to connect the camera to your monitoring system; you should plan the route from the recorder to each camera
- 4) How to keep the camera out of harm's way. It's recommended to mount your cameras in an elevated position to prevent easy access.
- 5) Place your camera as close to the area of interest as practicable. The best position is from about 3-4m (9-13ft) above looking slightly down.

- 6) Although the sky looks nice when you look at the live view from your camera, it is an unlikely direction for an offender to approach from. Keep the camera pointed down away from the sky or ceiling. This will also minimize glare from lighting affecting the image.
- 7) Think about the most likely way a potential offender may approach your home and position your cameras to give you the best coverage of these areas.
- 8) The camera's casing is resistant to water, different weather conditions and tampering. However, the cable and connectors are vulnerable and require protection.
- 9) Even though the camera is weather and water-resistant, prolonged exposure to adverse weather conditions such as sunlight or excessive moisture, may eventually damage the internal components of the camera and adversely affect its performance.

Connecting your Camera



Connection Guide

- 1) Connect the camera's RS485, Video, Audio and Power connectors to the Video, Audio & Power cable. Make sure to twist and lock video connectors for a secure connection. Screw in the RS485 connectors making sure that the red and black line up with the positive and negative icons on the RS485 connection (check the tag on the camera cable).
- 2) Remove the green RS485 terminal block from the PTZ port on the DVR, and then using a flat-head screwdriver, attach the pair of PTZ wires on the other end of the Video & Power cable (RED to + / A socket, BLACK to - / B socket) to the RS485 terminal block. When wiring connections are complete, plug the RS485 terminal block back into the PTZ port on the DVR.
- 3) Connect the camera to a video input on the DVR. For ease in configuring the RS485 settings, we suggest connecting it to channel 1 initially.
- 4) Connect the camera to the power adapter. After the camera is powered on, if you do not see an image or the image is poor, please check that you are using the correct video output signal for your DVR. Hold for 2 seconds; Up for Analog, Left for AHD, Right for TVI and Down for CVI.

Configuring PTZ settings

The DVR's default RS485 settings should allow you to use the camera zoom without any additional configuration. But to be sure, check that the settings in your DVR's Device PTZ menu match the ones shown here. For more information on configuring PTZ settings, consult your DVR user manual.

Camera No.:	Channel1
Baud Rate:	9600
Data Bit:	8
Stop Bit:	1
Parity:	None
Flow Ctrl:	None
PTZ Protocol:	Pelco-D
Address(0-255):	1